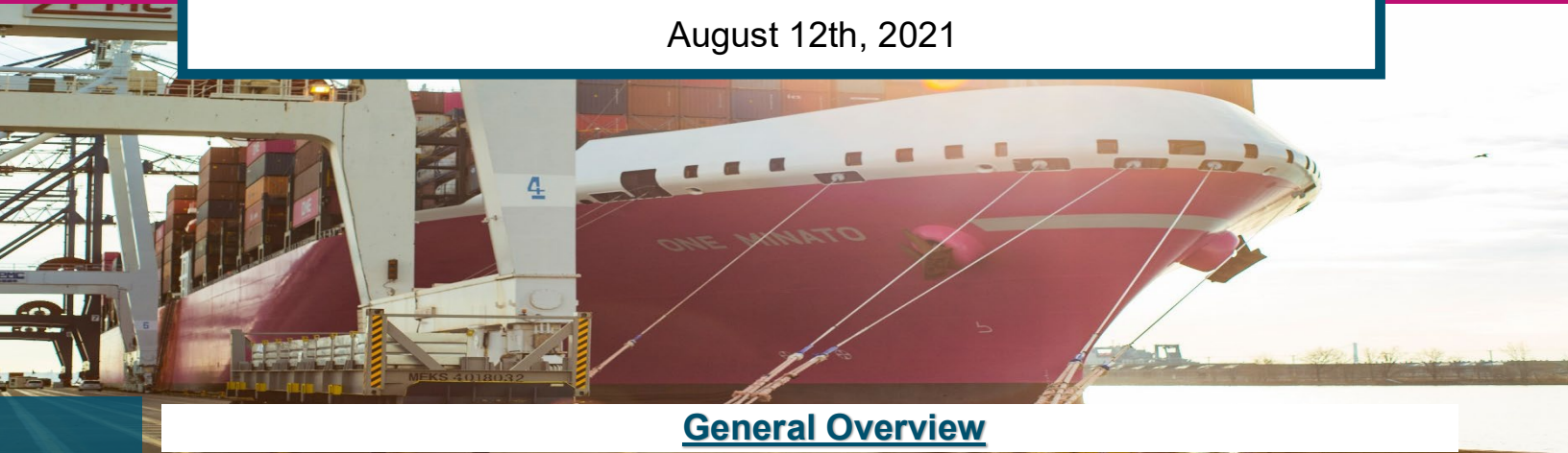


ONE View – North America Customer Newsletter

August 12th, 2021



General Overview

Equipment Alert: Historic volumes and increased dwell times on the street have stretched available capacity everywhere. It is critical for all customers to expedite the unloading of containers at local DC's and that all empty containers are returned as quickly as possible to improve chassis velocity.

Congestion: About a 30% increase in import volume (by all Carriers) has arrived in Port of Los Angeles and Long Beach. To protect our Shippers from more significant delays via rail, ONE is limiting the volume of our inbound bookings via Los Angeles/Long Beach/Oakland to all IPI points until further notice. The labor shortage for Los Angeles/Long Beach, Oakland, and Houston is becoming more problematic since the peak season began. About 15% of labor requested for LA/LB is not filled, followed by Oakland with 7% this past week.

Covid-19 (Delta Variant): Another surge is sweeping across Asia, causing more delays, with most affected areas Cat Lai (Vietnam) and Shanghai (details below on this report).

Truck Capacity: Due to continued huge volumes, New York and Charleston 30-35 days waiting, Norfolk and Charlotte 25-28 days waiting, Savannah, Baltimore, Louisville, Atlanta, Dallas, Houston, Salt Lake City, and Chicago, are currently most negatively impacted by Truck capacity with 14 - 20 days waiting.

Chassis Constraints: This week's most affected locations by the Chassis constraints are Seattle, Tacoma, Houston, Chicago, Joliet, Detroit, Charleston, Atlanta, Charlotte, and Pittsburgh. You can scroll to the bottom to "ONE North America's Resources" and click the links for details.

Terminal Conditions for USA/CANADA

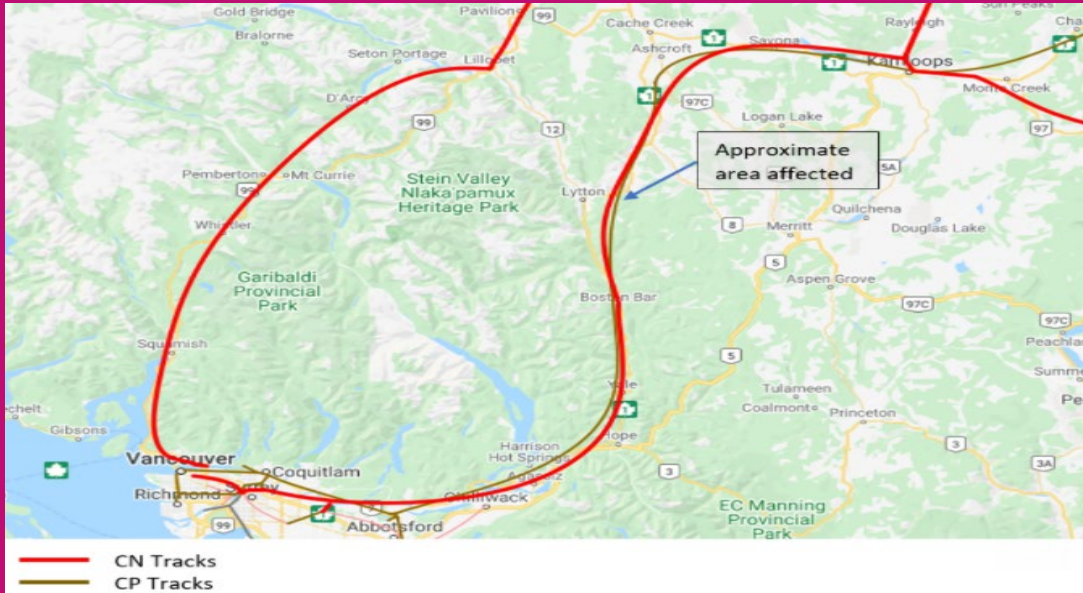
- **Pacific North West** – Current average dwell time as follows: WUT **17 days**. Also, WUT is operating hoot shifts to reduce some congestion. Husky Terminal, **7 days**. Also, Husky Saturday gates are open. Seattle T18, **10 days**. Also, T5 has open to store imports. Majority of ONE's decked rail imports are at WUT terminal. Prince Ruppert and Deltaport terminals are currently fluid, no major issues to report.
- **Port of Oakland** – OCIT and Trapac both terminals averaging **5 days** rail dwell time. Carriers continue to stay away from Oakland, there has been a reduction of 7 vessels waiting to berth. Due to reduced volumes at Oakland congestion has drastically reduced since July.
- **Port of Los Angeles/Long Beach** – All terminals are averaging from **14 to 18 days** of rail dwell. Majority of our decked units are at YTI, and Trapac terminals. The number of vessels waiting to berth keeps increasing caused by vessels omitting Oakland and additional volume because by peak season. Labor shortage is becoming more of an issue, which has added 1-2 days of wait time for vessel to berth and commencement of vessel operation.
- **East Coast & Gulf** – The main difficulties facing the terminals are: GCT-BAYONNE (New Jersey) rail dwell of **5 days**, GCT (New York) rail dwell of **7 days**, GPA (Savannah) is enduring some berth construction, which currently has **17 vessels** waiting for berth, NIT/VIG (Norfolk) rail dwell of **6 days**. We anticipate the bunching of vessels waiting in Savannah to continue next several weeks. **Houston is facing multiple areas of problems.** Currently no vessels at anchor but four additional vessels due to arrive end of this week. Biggest challenge continues to be chassis constraints (caused by huge import volume), and shortage of labor (crane operators), Houston will be the main pain-point for the next several weeks in the Gulf & East Coast.

Anchor and Berth at Select Ports

Port Location	Total Vessels (all Lines)	Days Waiting
Los Angeles/Long Beach, CA	32	0-5 days
Oakland, CA	8	8-15 days
Seattle/Tacoma, WA	8	3-6 days
Vancouver, BC (Canada)	4	5-15 days
Savannah, GA	17	0-2 days

Interior Service Disruption CN-Rail Vancouver (B.C.)

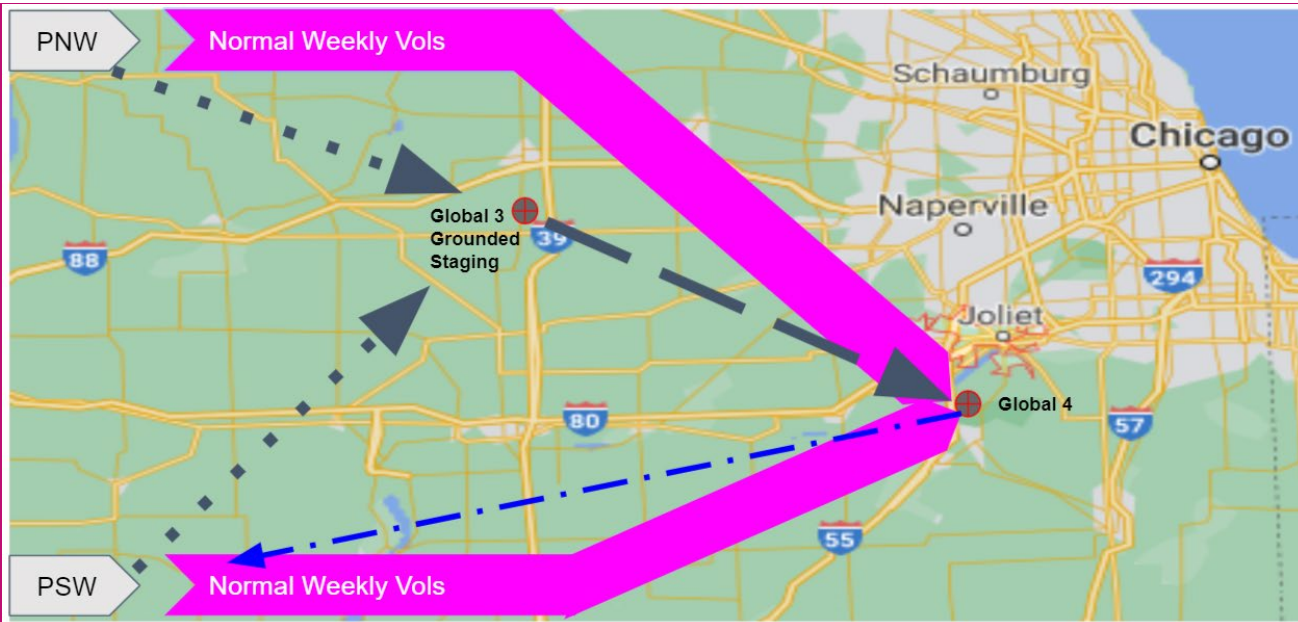
The Wildfire that disrupted the CNR rail line beginning of July resumed service three weeks ago. Rail delays continue to reduce. This week it's down to **3-5 days delay** in and out of Vancouver (from the U.S. midwest). We are anticipating this backlog of rail containers to be clear up in 2 weeks. However, due to the dry-hot season, we hope no more major fires will erupt, putting lives in danger and disrupting the rail service again.



RAIL NETWORK in G3 & G4 Chicago, IL

Since (early June) ONE has been railing 40' import containers from Tacoma and Long Beach to G3 (to be decked) and later shuttled to G4 for containers to be picked up on wheels. This has been a successful program that ONE's Rail folks have put together. However, we need your support. Early this week, there were a total of **954 import units** sitting on wheels and **109 of those units** sitting for more than a week. We need the units (on wheels) picked up immediately to continue supporting this type of operation and to avoid units being decked. Thank you

RAIL NETWORK in G3 & G4 Chicago, IL (Reference Map)



Average Rail Transit Times for July 2021

(Does not include Port Rail Dwell Times)

From Los Angeles/Long Beach	From Seattle/Tacoma/Vancouver
Atlanta, GA – 20.8 Days	Atlanta, GA – 18.1 Days
Chicago, IL – 18.1 Days	Chicago, IL – 23.1 Days
Cleveland, OH – 24.9 Days	Cleveland, OH – 20.3 Days
Columbus, OH – 23.8 Days	Columbus, OH – 19.5 Days
Dallas, TX – 16.4 Days	Detroit, MI – 17.6 Days
Detroit, MI – 25.9 Days	Kansas City, KS – 20.6 Days
Houston, TX – 19.2 Days	St. Louis, MO – 26 Days
Kansas City, KS – 21.5 Days	Memphis, TN – 17.5 Days
St. Louis, MO – 24 Days	New York, NY – 38.3 Days
Memphis, TN – 19.6 Days	
New York, NY – 27.6 Days	

Off Dock Rail Ops Port LA/LB

Union Pacific Railroad's (UPRR) 7-day pause (U.S. West Coast to Chicago) two weeks ago allowed them to focus on the backlog of imports in other areas. Total Rail Import units dropped 7% at the ICTF rail facility this past week and 28% from three weeks ago. The main destinations most affected are Salt Lake City (Ut), New Orleans (La), Denver (Co), Omaha (Ne), El Paso (Tx), and San Antonio (Tx).

NEW EC6 SERVICE COMMENCE (Direct service from Asia to Gulf)

The vessel ONE Modern 056E has called Houston, Tx on June 13th, the next port of call is Mobile, Al 17th, and New Orleans on the 20th. Following vessel will be the ONE Matrix 061E call Houston, Tx July 9th. Following are the links to the schedule and the service shown below.

[Click Here for Service Maps](#)

[Click Here for Schedule](#)

ASIA – NORTH AMERICA | EC6: East Coast 6

Last update : 6-May-2021

For more information, please click [here](#)

PORT ROTATION (Terminals are subject to change)

ORIGIN	ETA/ETD	TERMINAL
Kaohsiung	SUN/SUN	Kao Ming Container Terminal (KMCT)
Hongkong	TUE/TUE	Hong Kong Seaport Alliance (HKSPA)
Yantian	WED/THU	Yantian International Container Terminal (YICT)
Ningbo	SAT/SUN	Ningbo Port Beilun Second Container Terminal (NBSC2)
Shanghai	SUN/MON	SIPG Yangshan Phase IV
Pusan	TUE/WED	TBN
Houston	SAT/MON	Barbours Cut Terminal (BCT)
Mobile	TUE/WED	APMT
New Orleans	FRI/SAT	Napoleon Avenue Terminal
Kaohsiung	SUN/SUN	Kao Ming Container Terminal (KMCT)

Turnaround days: 70

NOTE: Transit times and port rotation are as of now and subject to change

TPWB	HOU	MOB	MSY	TPWB	KHH	HKG	YTN	NGB	YSA	PUS
KHH	34	37	40	HOU	34	36	37	40	41	43
HKG	32	35	38	MOB	32	34	35	38	39	41
YTN	30	33	36	MSY	29	31	32	35	36	38
NGB	27	30	33							
YSA	26	29	32							
PUS	24	27	30							

KEY TRANSIT TABLE - UNLOCODE PORT NAME & COUNTRY NAME

KHH: Kaohsiung, Taiwan | HKG: Hongkong, China | YTN: Yantian, China | NGB: Ningbo, China | YSA: Yangshan, China | PUS: Pusan, Korea | HOU: Houston, USA | MOB: Mobile, USA | MSY: New Orleans, USA

Surging Covid-19 (Delta Variant) in Asia

Covid-19 Delta Variant continues to spread in Asia. Vietnam is currently the hardest hit country with most infections, forcing the major cities to have 6 pm curfews and lockdowns **until August 16th**.

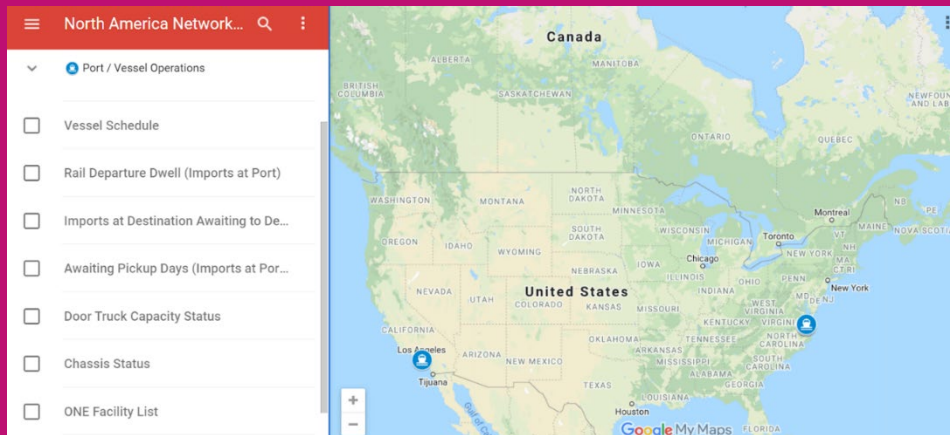
- **Factories in Vietnam** - Massive Covid testing is taking place, which may force more shut down of factories based on the results.
- **Cat Lai** - This has put a major constraint on Trucker capacity, having to ingate containers 72 hours before vessel departure and having them provide a certificate of negative Covid-19 results.
- **Busan** – Estimate 1.5 days waiting for vessel to berth.
- **Qingdao** – No waiting time for vessels.
- **Ningbo** – Estimate 2 to 3 days waiting time for vessels to berth. Ningbo Meidong Container Terminal has temporally shutdown due to Covid case. No ONE or Partner vessels call that terminal.
- **Shanghai (WGQ)** – More than 3 days waiting for vessels to berth.
- **Shanghai (YAN)** – More than 3 days waiting for vessels to berth.
- **Xiamen** – Estimate 1 to 2 days waiting for vessels to berth.
- **Shekou** - Estimate 1 to 2 days waiting for vessels to berth.
- **Yantian** – Estimate 4 to 7 days waiting for vessels to berth.
- **Hong Kong** – Estimate 1 day waiting for vessels to berth.

ONE's North America Resources

With your ONE eCommerce Login you have access to ONE's North America Network Map and Port Gate Calendar which contain detailed information like Vessel Schedules, Rail Departure Dwell, Door Truck Capacity, Chassis Status and much more.

Please note – The image and message will remain the same but data is updated three times per week.

[Click Here for the North America Network Map](#)



[Click Here for the ONE Gate Calendar](#)

ONE Partner Facilities Gate Calendar						
Today	May 2021				Print	Week
Sun	Mon	Tue	Wed	Thu	Fri	Sat
TRAPAC LAX Open					APMT & WBCT also open 2nd shift	APMT, ITS & TRAPAC LAX OPE
TRAPAC LAX Open					2nd shift LA/LD Monthly stop	APMT, WBCT & Trapac LAX also
TRAPAC LAX Open					APMT, WBCT & Trapac LAX also	ITS, WBCT & TRAPAC LAX OPE
TRAPAC LAX Open					8pm Oakland Stop Work Mtg 2nd	WBCT & Trapac LAX Open
Trapac LAX Open	ONE-LINE FACILITY HOLIDAY			YTI closed 2nd shift	APMT, WBCT & Trapac LAX also	WBCT, ITS & Trapac LAX Open
	ONE-LINE FACILITY HOLIDAY				APMT also open 2nd shift	

Thank you for choosing Ocean Network Express (North America), Inc.