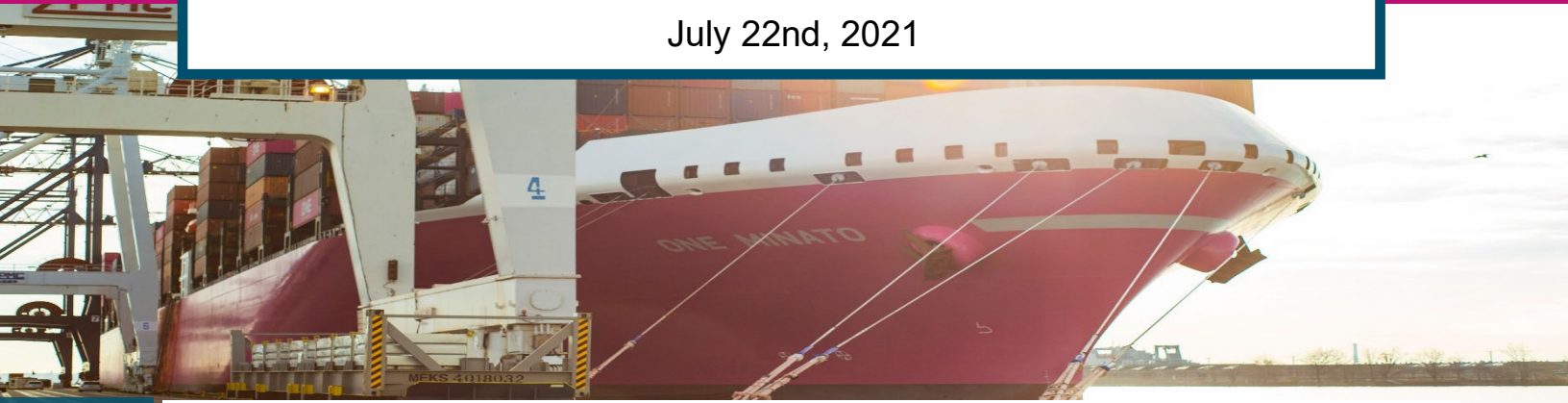


# ONE View – North America Customer Newsletter

July 22nd, 2021



## General Overview

**Equipment Alert: Historic volumes and increased dwell times on the street have stretched available capacity everywhere. Please expedite your pickup and return of containers to help ensure cargo fluidity.** Peak season is upon us. In the next couple of weeks expecting an increase **spike of 30% (all Carriers)** in import volume arriving in Port of Los Angeles and Long Beach. Canadian National Railway (CNR) has resumed rail service early this week in and out of Vancouver. As reported last week regarding Union Pacific's 7-day pause for all eastbound traffic destined to Global IV Terminal in Chicago, BNSF has reported that they will start to meter the imports to Chicago. Also, we ask import containers sitting on wheels in Chicago Global IV (G4) to be picked up immediately to improve the chassis velocity. Several imports at G4 are still sitting on wheels (for several days) not been picked up yet. This week are the most affected locations by the Chassis Pool being tight are Seattle, Tacoma, Houston, Chicago, Joliet, Charleston, and Pittsburgh. For details, you can scroll to the bottom to "ONE North America's Resources" and click the links.

## Terminal Conditions for USA/CANADA

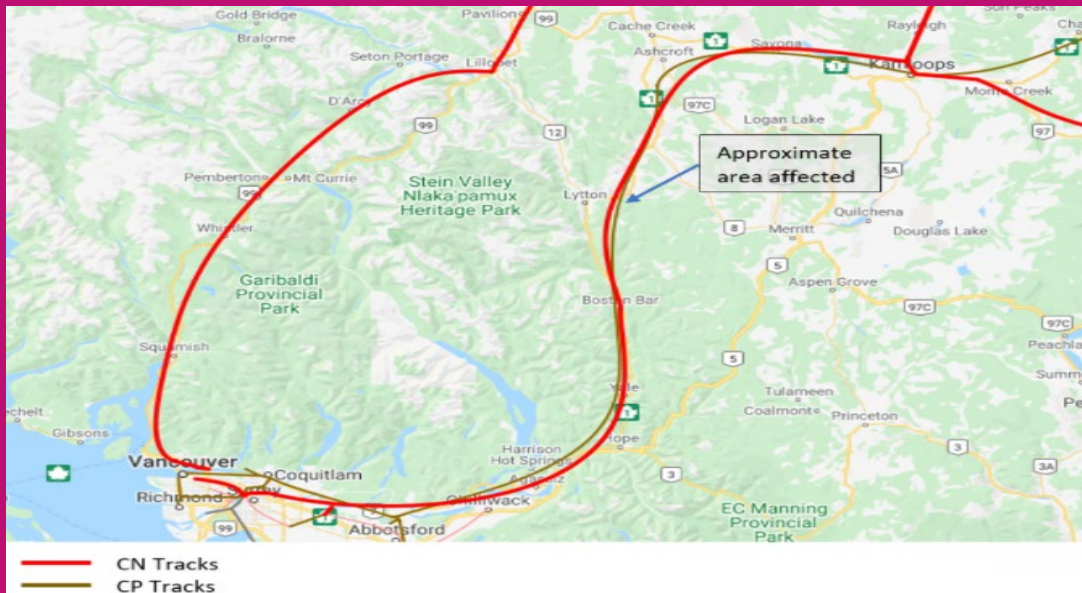
- **Pacific North West** – Current average dwell time as follows: WUT **16 days** rail dwell time average. Husky Terminal, **7 days** rail dwell average. Seattle T18, **5 days** rail dwell average. Majority of ONE's decked rail imports are at WUT terminal. Due to the Wildfire near Lytton, BC (near Vancouver), Detlaport is backlogged with rail cargo for up to 8 days, but the rail line has re-open early this week, and we expect the situation to improve. Prince Rupert terminal is currently fluid but expecting more cargo volume from other Carriers.
- **Port of Oakland** – OCIT and Trapac both terminals averaging **4 days** rail dwell time. Since Carriers have starting to stay away from Oakland, there has been a reduction of 12 vessels waiting to berth.
- **Port of Los Angeles/Long Beach** – All terminals are averaging from **20 to 30 days** of rail dwell. Majority of our decked units are at YTI, and Trapac terminals. For specific information regarding rail dwells is listed below under Rail Ops.
- **East Coast** – The main difficulties facing the terminals are: GCT-BAYONNE (New Jersey) **rail dwell of 7 days**, GCT (New York) **rail dwell of 7 days**, GPA (Savannah) is enduring some berth construction, which currently has 9 vessels waiting for berth, NIT/VIG (Norfolk) rail dwell of **6 days**, and Houston facing biggest problems with **rail dwell of 16 days**, labor shortage (crane operators), tight on chassis caused by huge volumes.

## Anchor and Berth at Select Ports

Port Location	Total Vessels (all Lines)	Days Waiting
Los Angeles/Long Beach, CA	22	0-3 days
Oakland, CA	12	8-20 days
Seattle/Tacoma, WA	6	3-6 days
Vancouver, BC (Canada)	10+	5-15 days
Savannah, GA	9	0-2 days

## Interior Service Disruption CN-Rail Vancouver (B.C.)

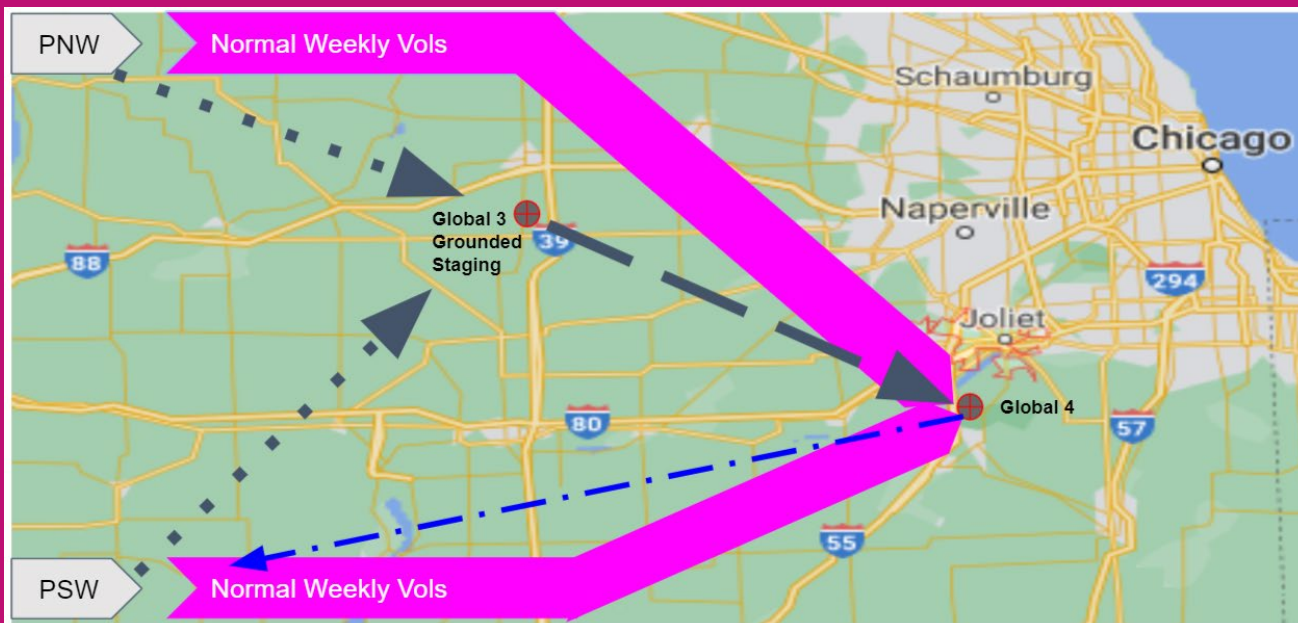
The Wildfire that disrupted the CNR rail line for approximately three weeks has resumed service early this week, and **gate restrictions to deliver export containers to Vancouver at Ramp facilities have been removed.** However, it will take a 2 to 3 weeks that the rail service will resume at normal velocity. There is currently a backlog of imports and exports of eight-day delay on the rail line to and from Vancouver. We anticipate the delay will continue to improve.



## RAIL NETWORK in G3 & G4 Chicago, IL

Since (early June) ONE has been railing 40' import containers from Tacoma and Long Beach to G3 (to be decked) and later shuttled to G4 for containers to be picked up on wheels. However, we've noticed that several units are waiting for pick-up sitting on wheels for several days. We are currently reaching out to those customers. It's imperative that everyone cooperates for this special service to work. Thank you

## RAIL NETWORK in G3 & G4 Chicago, IL (Reference Map)



# Average Rail Transit Times of June 2021

From Los Angeles/Long Beach	From Seattle/Tacoma/Vancouver
Atlanta, GA – 17 Days	Atlanta, GA – 19 Days
Chicago, IL – 16 Days	Chicago, IL – 23 Days
Cleveland, OH – 22 Days	Cleveland, OH – 16 Days
Columbus, OH – 21 Days	Columbus, OH – 16 Days
Dallas, TX – 15 Days	Detroit, MI – 12 Days
Detroit, MI – 20 Days	Kansas City, KS – 13 Days
Houston, TX – 18 Days	St. Louis, MO – 15 Days
Kansas City, KS – 15 Days	Memphis, TN – 12 Days
St. Louis, MO – 17 Days	New York, NY – 32 Days
Memphis, TN – 17 Days	
New York, NY – 31 Days	

## Off Dock Rail Ops Port LA/LB

The amount of Rail Import dwells has maintained. Rail Ops Team continues to be in close communication with Port Terminals, Union Pacific Railroad, and ICTF to avoid further increase of dwell time and the increasing amount of rail import units. The main destinations most affected are Salt Lake City (Ut), New Orleans (La), Denver (Co), Omaha (Ne), El Paso (Tx), and San Antonio (Tx).

## NEW EC6 SERVICE COMMENCE (Direct service from Asia to Gulf)

The vessel ONE Modern 056E has called Houston, Tx on June 13th, the next port of call is Mobile, Al 17th, and New Orleans on the 20th. Following vessel will be the ONE Matrix 061E call Houston, Tx July 9th. Following are the links to the schedule and the service shown below.

[Click Here for Service Maps](#)

[Click Here for Schedule](#)

**ASIA – NORTH AMERICA | EC6: East Coast 6**

Last update : 6-May-2021

For more information, please click here

	HOU	MOB	MSY		TPWB	KHH	HKG	YTN	NGB	YSA	PUS
KHH	34	37	40		HOU	34	36	37	40	41	43
HKG	32	35	38		MOB	32	34	35	38	39	41
YTN	30	33	36		MSY	29	31	32	35	36	38
NGB	27	30	33								
YSA	26	29	32								
PUS	24	27	30								

**PORT ROTATION** (Terminals are subject to change)

ORIGIN	ETA/ETD	TERMINAL
Kaohsiung	SUN/SUN	Kao Ming Container Terminal (KMCT)
Hongkong	TUE/TUE	Hong Kong Seaport Alliance (HKSPA)
Yantian	WED/THU	Yantian International Container Terminal (YICT)
Ningbo	SAT/SUN	Ningbo Port Beilun Second Container Terminal (NBSCT)
Shanghai	SUN/MON	SIPG Yangshan Phase IV
Pusan	TUE/WED	TBN
Houston	SAT/MON	Barbours Cut Terminal (BCT)
Mobile	TUE/WED	APMT
New Orleans	FRU/SAT	Napoleon Avenue Terminal
Kaohsiung	SUN/SUN	Kao Ming Container Terminal (KMCT)
<b>Turnaround days:</b>	<b>70</b>	

NOTE: Transit times and port rotation are as of now and subject to change

**KEY TRANSIT TABLE - UNLOCODE PORT NAME & COUNTRY NAME**

KHH: Kaohsiung, Taiwan | HKG: Hongkong, China | YTN: Yantian, China | NGB: Ningbo, China | YSA: Yangshan, China | PUS: Pusan, Korea | HOU: Houston, USA | MOB: Mobile, USA | MSY: New Orleans, USA

## General Update on Port Congestion in Asia

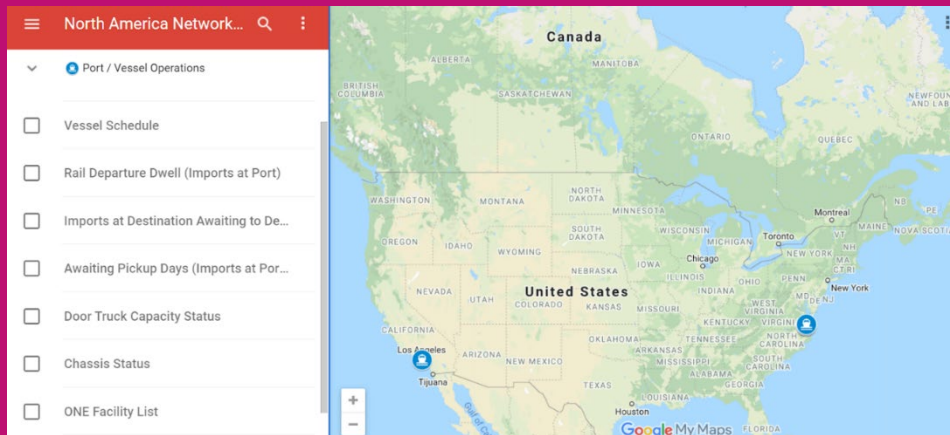
- **Busan** – Yard expected to be around 85% and delay will be expected. Estimated 2 days and above waiting to discharge.
- **Qingdao** – No waiting time reported.
- **Ningbo** – Waiting time 1-2 days. Productivity will be affected due to tighter quarantine inspection.
- **Shanghai (WGQ)** – Waiting time 1 - 2 days.
- **Shanghai (YAN)** – Waiting time 1 - 2 days.
- **Xiamen** – Half day waiting due to tighter quarantine inspection.
- **Shekou** – Waiting time 2 days.
- **Yantian** – Waiting time 1 day.
- **Hong Kong** – Yard capacity at 90%. Discharge waiting 4 days or more. Loading 1 day.

## ONE's North America Resources

With your ONE eCommerce Login you have access to ONE's North America Network Map and Port Gate Calendar which contain detailed information like Vessel Schedules, Rail Departure Dwell, Door Truck Capacity, Chassis Status and much more.

Please note – The image and message will remain the same but data is updated three times per week.

[Click Here for the North America Network Map](#)



[Click Here for the ONE Gate Calendar](#)

ONE Partner Facilities Gate Calendar						
Today	May 2021		Print Week Month Agenda			
Sun	Mon	Tue	Wed	Thu	Fri	Sat
TRAPAC LAX Open					APMT & WBCT also open 2nd shift	APMT, ITS & TRAPAC LAX OPEN
TRAPAC LAX Open				2nd shift LA/LD Monthly stop	APMT, WBCT & Trapac LAX also	ITS, WBCT & TRAPAC LAX OPEN
TRAPAC LAX Open					APMT, WBCT & Trapac LAX also	ITS, WBCT & TRAPAC LAX OPEN
TRAPAC LAX Open				8pm Oakland Stop Work Mtg 2nd	APMT, WBCT & Trapac LAX also	WBCT & Trapac LAX Open
Trapac LAX Open	ONE-LINE FACILITY HOLIDAY			YTI closed 2nd shift	APMT, WBCT & Trapac LAX also	WBCT, ITS & Trapac LAX Open
	ONE-LINE FACILITY HOLIDAY				APMT also open 2nd shift	

**Thank you for choosing Ocean Network Express (North America), Inc.**