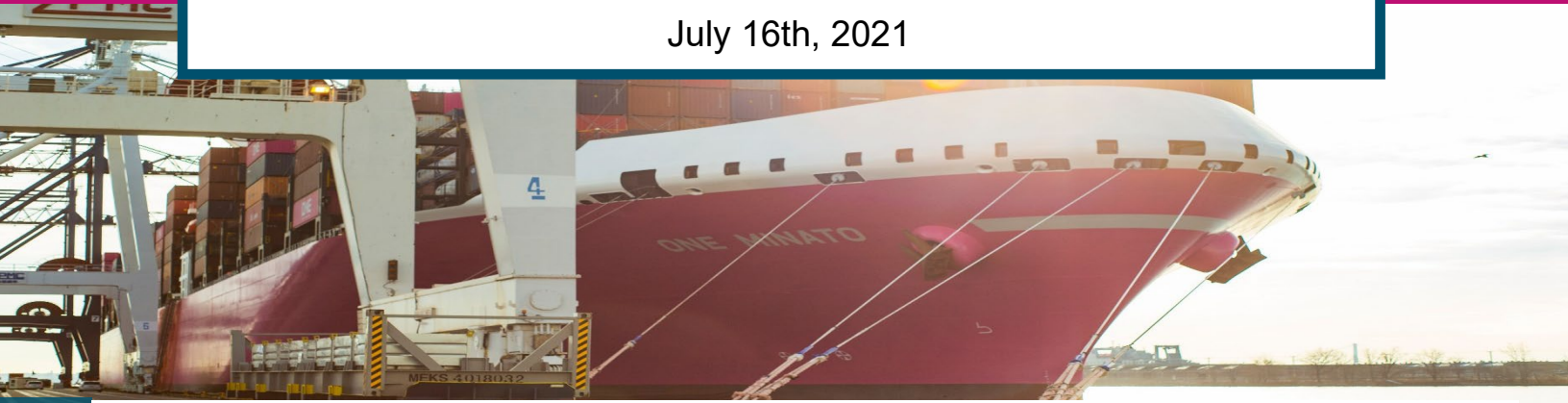


ONE View – North America Customer Newsletter

July 16th, 2021



General Overview

Equipment Alert: Historic volumes and increased dwell times on the street have stretched available capacity everywhere. Please expedite your pickup and return of containers to help ensure cargo fluidity. Based on last week's wildfire near Lytton, B.C., affecting the rail cargo velocity for eastbound and westbound trains in and out Vancouver, progress has been made. However, there's no clear indication when second (CNR) rail line will open. Since the peak is almost upon us unless we see an improvement of return of available empty containers to improve the chassis velocity, **we do not see the congestion at terminals improving this peak season.** The Union Pacific has announced a 7-day pause for all eastbound traffic destined to Global IV Terminal in Chicago from U.S. Westcoast. A Customer Advisory was published on the website yesterday (July 15th) related to that announcement. This week are the most affected by the Chassis Pool being tight are Seattle, Houston, Minneapolis, Chicago, Joliet, and Charleston. For details, you can scroll to the bottom to "ONE North America's Resources" and click the links.

Terminal Conditions for USA/CANADA

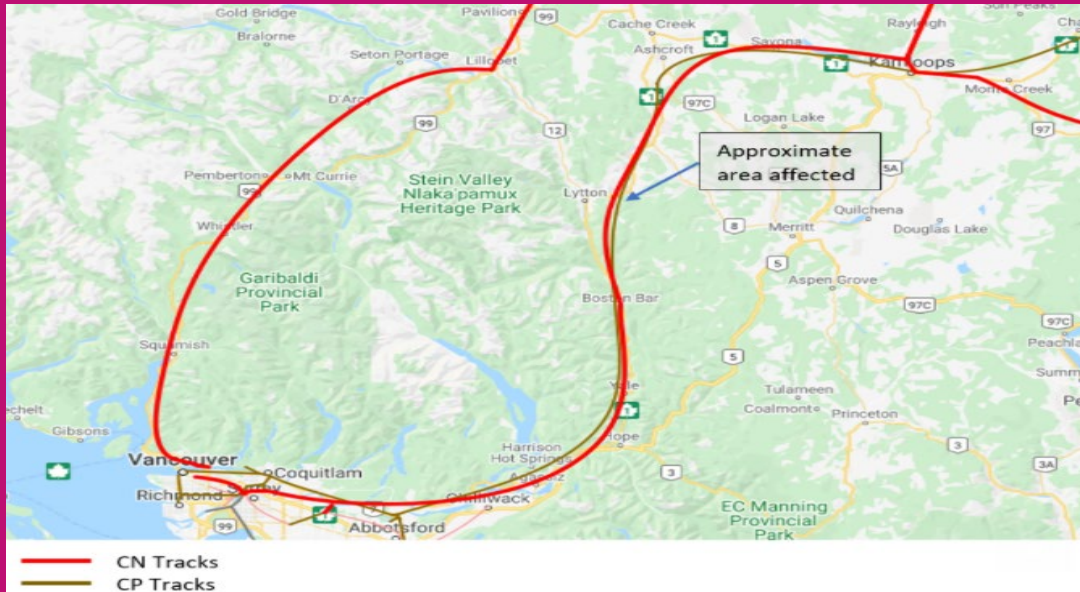
- **Pacific North West** – Current average dwell time as follows: WUT **13 days** rail dwell time average. Husky Terminal, **7 days** rail dwell average. Seattle T18, **14 days** rail dwell average. Majority of ONE's decked rail imports are at WUT terminal. Due to the **Wildfire** that took place near Lytton, BC (near Vancouver), Detlaport is backlogged with rail cargo up to 7 days. More details shown below "Interior Service Disruption CN-Rail Vancouver (B.C.)".
- **Port of Oakland** – OCIT and Trapac both terminals averaging **7 days** rail dwell time. However, there are 21 ships waiting to berth, which is forcing terminals carefully meter the discharge of imports.
- **Port of Los Angeles/Long Beach** – All terminals are averaging from **15 to 25 days** of rail dwell. Majority of our decked units are at YTI, ITS and Trapac terminals. More information regarding rail dwells is listed below under Rail Ops.
- **East Coast** – The main difficulties facing the terminals are: GCT-BAYONNE (New Jersey) **rail dwell of 6 days**, GCT (New York) **rail dwell of 8 days**, GPA (Savannah) dredging project is completed but due to Hurricane Elsa Port was closed for approximately 24 hours, which increase to 13 vessels waiting for berth, NIT/VIG (Norfolk) rail dwell of 4 days, and Houston facing biggest problems with **rail dwell of 20+ days**, labor shortage (crane operators), tight on chassis caused by huge volumes.

Anchor and Berth at Select Ports

Port Location	Total Vessels (all Lines)	Days Waiting
Los Angeles/Long Beach, CA	16	0-2 days
Oakland, CA	19	8-20 days
Seattle/Tacoma, WA	7	3-6 days
Vancouver, BC (Canada)	10+	5-15 days
Savannah, GA	13	0-2 days

Interior Service Disruption CN-Rail Vancouver (B.C.)

As mentioned last week on July 9th Customer Newsletter (V.6) about the **Wildfire** that disrupted the CNR rail line under Terminal Conditions section, the latest we expect the CNR Rail line to be fully restored is taking longer than expected. We are anticipating for the Rail line to re-open soon. However, since last week an increase of imports and exports have backlogged. Once the Rail line is restored, we expect it will take several weeks for the rail service to be at normal velocity. The affected region is Vancouver (Deltaport, Vanterm, Centerm, and FSD). Gate restrictions to Vancouver are still in effect.



RAIL NETWORK in G3 & G4 Chicago, IL

Since (early June) ONE has been railing 40' import containers from Tacoma and Long Beach to G3 (to be decked) and later shuttled to G4 for containers to be picked up on wheels. We continue to see progress of the reduction of grounded import containers being picked up at G4.

RAIL NETWORK in G3 & G4 Chicago, IL (Reference Map)



Average Rail Transit Times of June 2021

From Los Angeles/Long Beach	From Seattle/Tacoma/Vancouver
Atlanta, GA – 17 Days	Atlanta, GA – 19 Days
Chicago, IL – 16 Days	Chicago, IL – 23 Days
Cleveland, OH – 22 Days	Cleveland, OH – 16 Days
Columbus, OH – 21 Days	Columbus, OH – 16 Days
Dallas, TX – 15 Days	Detroit, MI – 12 Days
Detroit, MI – 20 Days	Kansas City, KS – 13 Days
Houston, TX – 18 Days	St. Louis, MO – 15 Days
Kansas City, KS – 15 Days	Memphis, TN – 12 Days
St. Louis, MO – 17 Days	New York, NY – 32 Days
Memphis, TN – 17 Days	
New York, NY – 31 Days	

Off Dock Rail Ops Port LA/LB

As mentioned last week on July 9th Customer Newsletter (V.6) about the growing number of Rail Imports that has been incurring aging over 30+ days, the volume has reduced 5% compared to last week total. Our Rail Ops Team has already discussed with Port Terminals, Union Pacific Railroad, and ICTF facility by assigning the Rail Imports tactically for rail departure. As a reminder, the main destinations most affected are Salt Lake City (Ut), New Orleans (La), Denver (Co), Omaha (Ne), El Paso (Tx), and San Antonio (Tx).

We will keep you posted on its progress.

NEW EC6 SERVICE COMMENCE (Direct service from Asia to Gulf)

The vessel ONE Modern 056E has called Houston, Tx on June 13th, the next port of call is Mobile, Al 17th, and New Orleans on the 20th. Following vessel will be the ONE Matrix 061E call Houston, Tx July 9th. Following are the links to the schedule and the service shown below.

[Click Here for Service Maps](#)

[Click Here for Schedule](#)

ASIA – NORTH AMERICA | EC6: East Coast 6

Last update : 6-May-2021

PORT ROTATION (Terminals are subject to change)

ORIGIN	ETA/ETD	TERMINAL
Kaohsiung	SUN/SUN	Kao Ming Container Terminal (KMCT)
Hongkong	TUE/TUE	Hong Kong Seaport Alliance (HKSPA)
Yantian	WED/THU	Yantian International Container Terminal (YICT)
Ningbo	SAT/SUN	Ningbo Port Beilun Second Container Terminal (NBSC2)
Shanghai	SUN/MON	SIPG Yangshan Phase IV
Pusan	TUE/WED	TBN
Houston	SAT/MON	Barbours Cut Terminal (BCT)
Mobile	TUE/WED	APMT
New Orleans	FRI/SAT	Napoleon Avenue Terminal
Kaohsiung	SUN/SUN	Kao Ming Container Terminal (KMCT)

TPWB	HOU	MOB	MSY	TPWB	KHH	HKG	YTN	NGB	YSA	PUS
KHH	34	37	40	HOU	34	36	37	40	41	43
HKG	32	35	38	MOB	32	34	35	38	39	41
YTN	30	33	36	MSY	29	31	32	35	36	38
NGB	27	30	33							
YSA	26	29	32							
PUS	24	27	30							

KEY TRANSIT TABLE - UN,LOCODE PORT NAME & COUNTRY NAME

KHH: Kaohsiung, Taiwan | HKG: Hongkong, China | YTN: Yantian, China | NGB: Ningbo, China | YSA: Yangshan, China | PUS: Pusan, Korea | HOU: Houston, USA | MOB: Mobile, USA | MSY: New Orleans, USA

NOTE: Transit times and port rotation are as of now and subject to change

General Update on Port Congestion in Asia

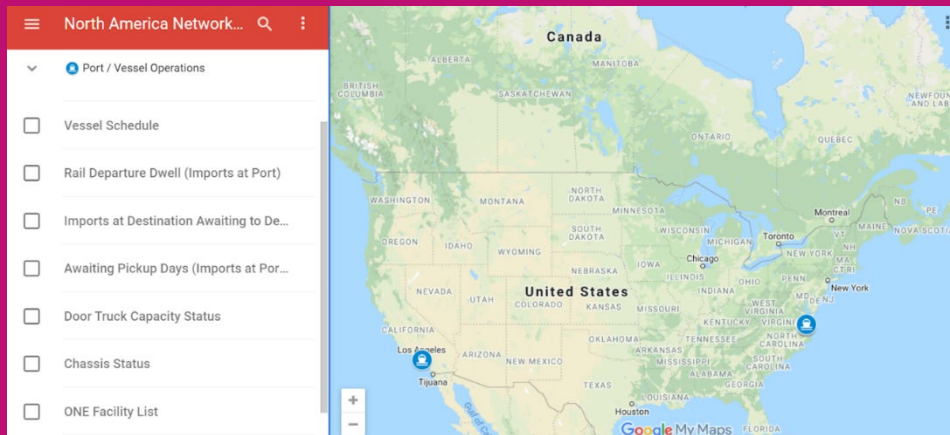
- **Busan** – Yard expected to be around 90% and delay will be expected. Estimated 2 days and above waiting to discharge.
- **Qingdao** – No waiting time reported.
- **Ningbo** – Waiting time 2-3 days. Productivity will be affected due to tighter quarantine inspection.
- **Shanghai (WGQ)** – Waiting time 1 – 2 days.
- **Shanghai (YAN)** – Waiting time 1 to 2 days.
- **Xiamen** – Half day waiting due to tighter quarantine inspection.
- **Shekou** – Waiting time 3 days.
- **Yantian** – Waiting time 1 day.
- **Hong Kong** – Yard capacity at 95%. Discharge waiting 8 days or more. Loading 2 days or more.

ONE's North America Resources

With your ONE eCommerce Login you have access to ONE's North America Network Map and Port Gate Calendar which contain detailed information like Vessel Schedules, Rail Departure Dwell, Door Truck Capacity, Chassis Status and much more.

Please note – The image and message will remain the same but data is updated three times per week.

[Click Here for the North America Network Map](#)



[Click Here for the ONE Gate Calendar](#)

ONE Partner Facilities Gate Calendar						
Today	May 2021		Print Week Month Agenda			
Sun	Mon	Tue	Wed	Thu	Fri	Sat
TRAPAC LAX Open					APMT & WBCT also open 2nd shift	APMT, ITS & TRAPAC LAX OPES
TRAPAC LAX Open				2nd shift LA/LD Monthly stop	APMT, WBCT & Trapac LAX also	ITS, WBCT & TRAPAC LAX OPE
TRAPAC LAX Open					APMT, WBCT & Trapac LAX also	ITS, WBCT & TRAPAC LAX open
TRAPAC LAX Open				8pm Oakland Stop Work Mtg 2nd	APMT, WBCT & Trapac LAX also	WBCT & Trapac LAX Open
Trapac LAX Open	ONE-LINE FACILITY HOLIDAY		YTI closed 2nd shift		APMT, WBCT & Trapac LAX also	WBCT, ITS & Trapac LAX Open
	ONE-LINE FACILITY HOLIDAY				APMT also open 2nd shift	